



## Introduction

The PCL series are high power output Switching DC power supply with rated power from 600W to 9KW. The PCL series adopts ZVZCS PWM technology, which greatly reduces switching consumption and therefore facilitates switching function with high efficiency and high stability.

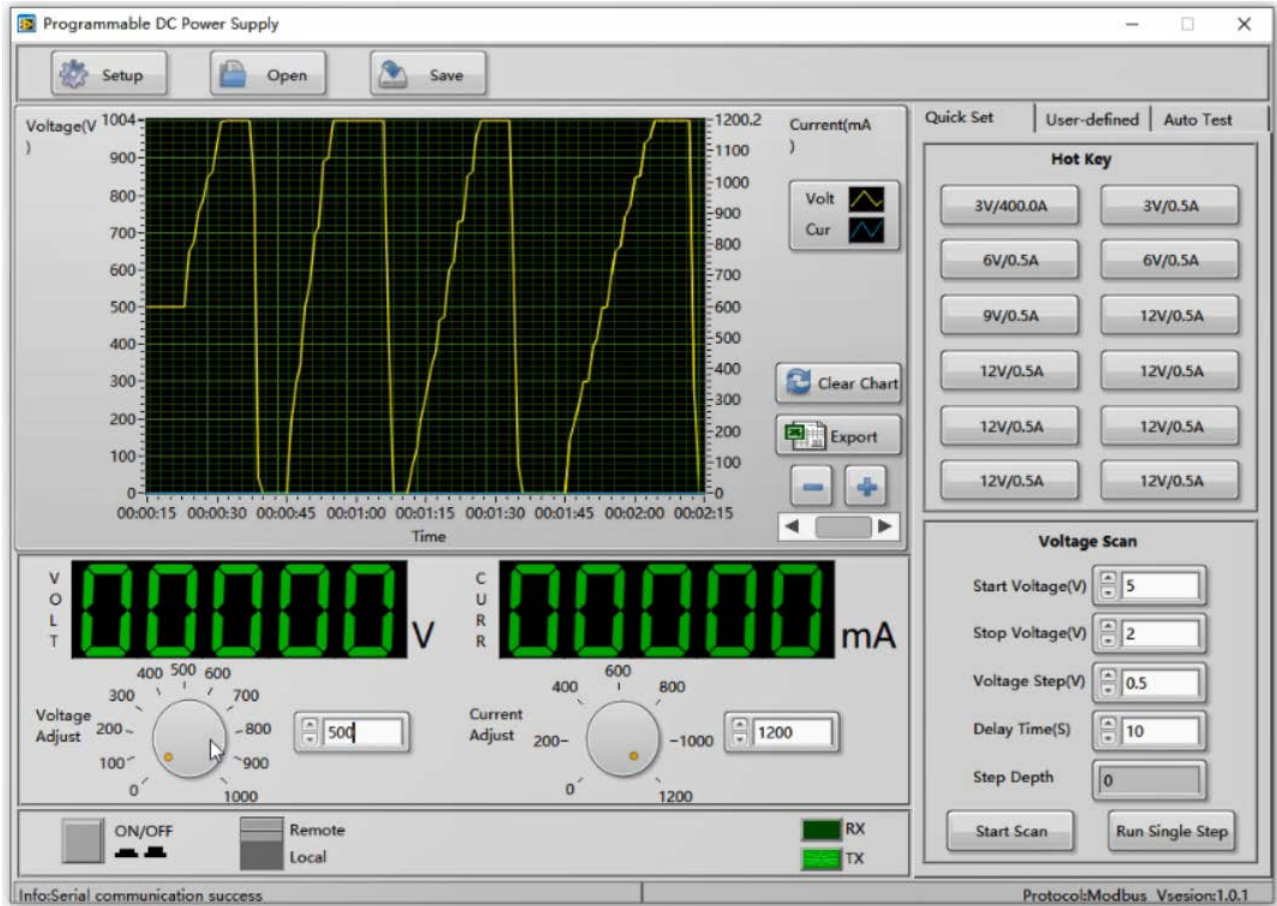
The PCL series are built into a 2U/3U 19-inch standard chassis. The maximum rated voltage is from 6V to 600V and the maximum rated current is from 2A to 300A. RS232 and RS485 communication interfaces are made as standard part for PCL series, providing multiple communication choices for digital control.

## Features

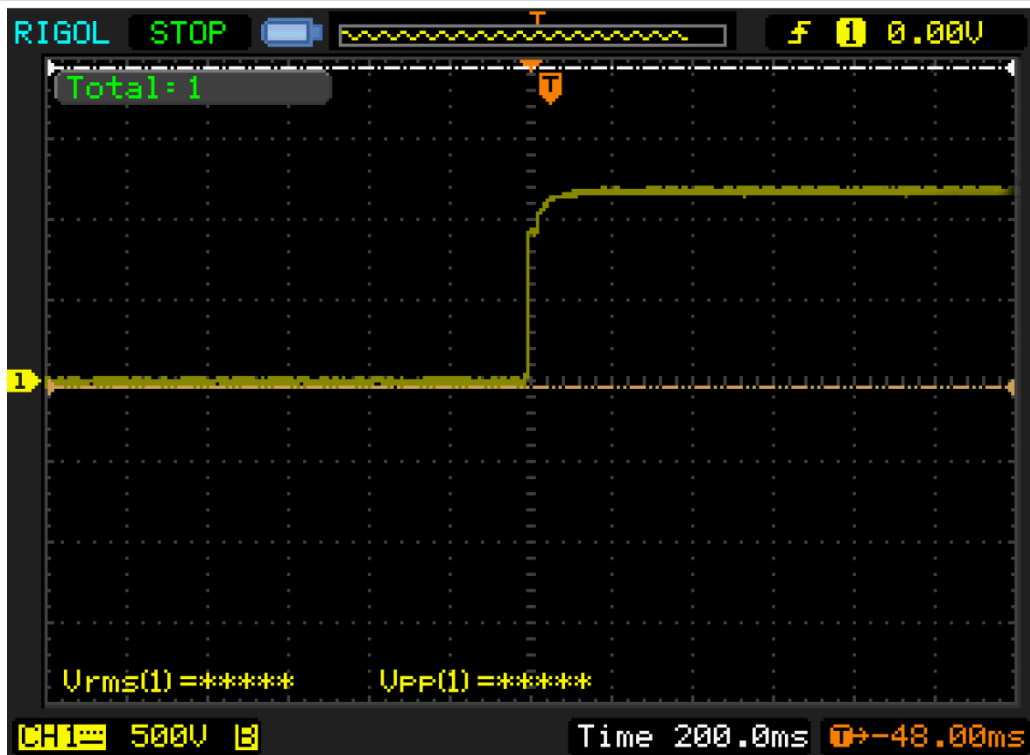
- ✓ Adopting ZVZCS PWM technology, high efficiency and high stability
- ✓ 4 1/2 digits LED display for voltage and current
- ✓ Max.rated output 600W to 9KW
- ✓ Max.rated voltage from 6V to 600V
- ✓ Max.rated current from 2A to 300A
- ✓ Thermostatic control fan, low noise
- ✓ Low ripple, high stability
- ✓ No overshoot during startup
- ✓ List mode function, Auto Run function
- ✓ Remote sensing function
- ✓ **Adjustable voltage rise time**
- ✓ Preset function, setting of voltage and current with output open circuit
- ✓ Multiple protections: OVP, OTP, UVP and current limit protections
- ✓ Multiple programming interfaces: RS232 & RS485, ModBus-RTU commands
- ✓ Optional function: 0-5V, 0-10V or 4-20mA analog control and feedback for voltage and current

## Free PC Software

Multiple remote control and sampling functions. Such as: voltage & current setup, voltage & current feedback, data recording, export data to EXCEL, List mode function, auto run function. **Adjustable voltage rise time.**



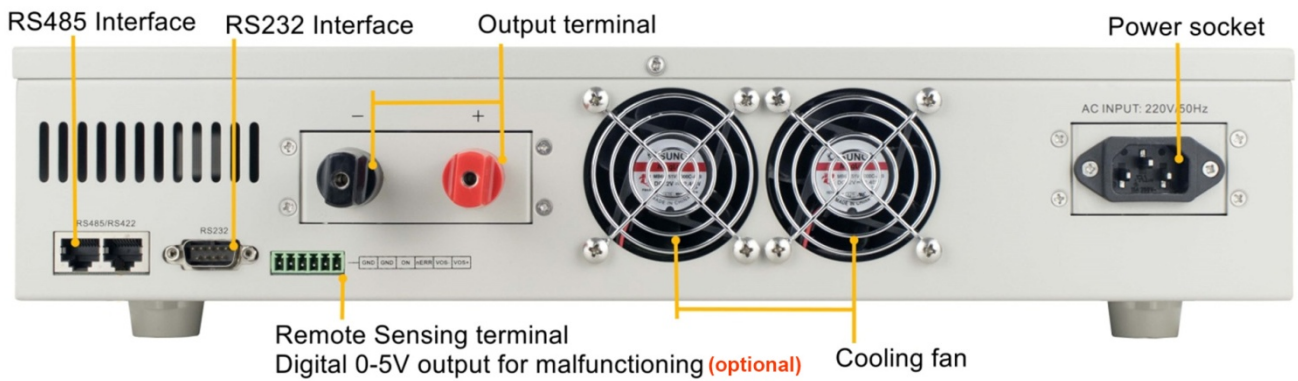
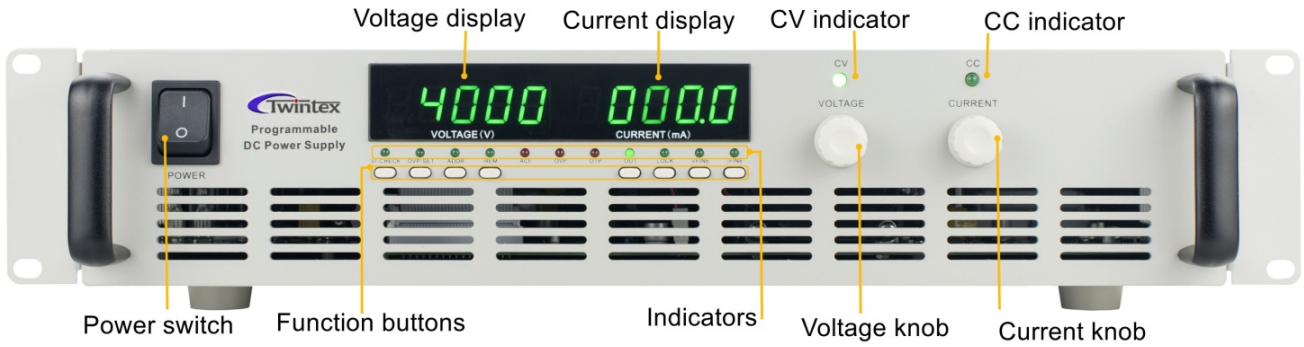
## No overshoot



# High Power DC Power Supply



## Panel Descriptions (2U frame)



# High Power DC Power Supply



## Product Photos (1/2 2U frame for 600W~1200W)



## Product Photos (2U frame for 1.2kW~5kW)



(220Vac input for 2.4kW~3kW)



(380Vac input for 4kW~5kW)

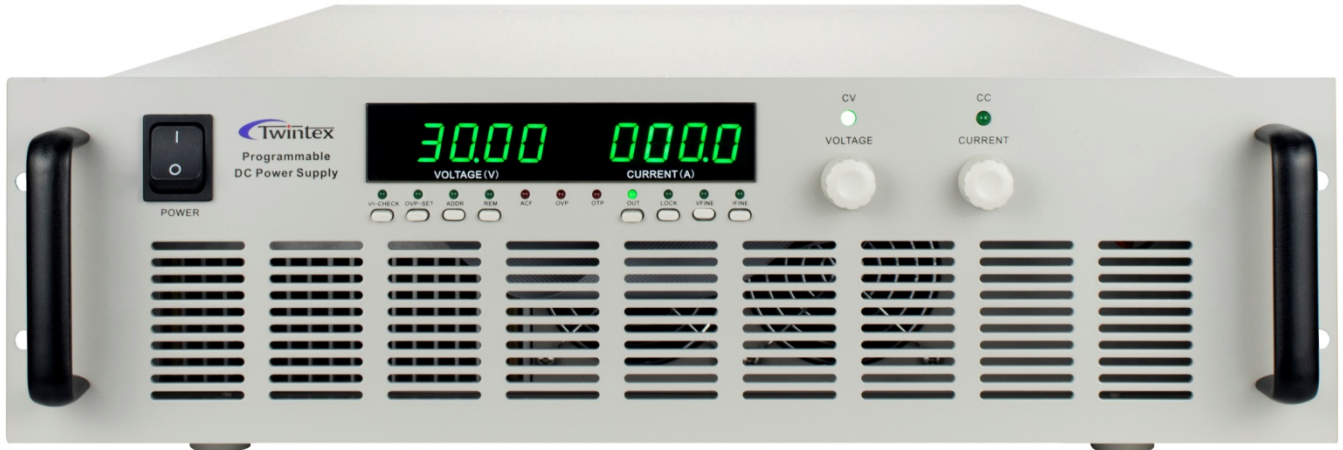
**TWINTEX** • [www.twintex.com.tw](http://www.twintex.com.tw)

Taipei, Taiwan: Tel: +886-02-2915 0101 • Fax: +886-02-2916 0101  
Shenzhen, China: Tel.: +86-755-2812 9890 • Fax: +86-755-2814 9802

# High Power DC Power Supply



## Product Photos (3U frame for 6kW~9kW)



**TWINTEX** • [www.twintex.com.tw](http://www.twintex.com.tw)

Taipei, Taiwan: Tel: +886-02-2915 0101 • Fax: +886-02-2916 0101  
Shenzhen, China: Tel.: +86-755-2812 9890 • Fax: +86-755-2814 9802

## Specifications

Output		
Rated Voltage	DC 0~100% full range adjustable	
Rated Current	DC 0~100% full range adjustable	
OVP Range	DC 0~105% of rated voltage adjustable	
Line Regulation	CV $\leq$ 0.1%+2LSB, CC $\leq$ 0.2%+2LSB	
Load Regulation	CV $\leq$ 0.1%+2LSB, CC $\leq$ 0.1%+2LSB	
Ripple & Noise	$\leq$ 50mV / 100mV / 200mV	
Programming		
Programming Resolution	Voltage	0.001V / 0.01V / 0.1V
	Current	0.001A / 0.01A / 0.1A
	OVP	0.001V / 0.01V / 0.1V
Interface	RS232 and RS485	
Commands	ModBus-RTU	
Display		
Meter	4 1/2 digits LED display for voltage and current	
Display Resolution	Voltage	0.001V / 0.01V / 0.1V
	Current	0.001A / 0.01A / 0.1A
Display Accuracy	Voltage	$\leq$ 0.2%FS+2LSB
	Current	$\leq$ 0.5%FS+2LSB
Protection		
Over Voltage Protection (O.V.P.)	Built-in OVP protection with limit of 105% rated output voltage. The output will be shut down when OVP is activated.	
Over Temperature Protection (O.T.P.)	Built-in OTP protection with heat sink temperature limit of 105°C $\pm$ 5°C. The output will be shut down when OTP is activated.	
Under Voltage Protection (U.V.P.)	Built-in UVP protection with limit of 165Vac. The output will be shut down when UVP is activated.	
General		
Cooling method	Cooling fan	
Operating environment	0°C~40°C, 10%~80%RH	
Storage environment	-20°C~70°C, 10%~90%RH	

# High Power DC Power Supply



Model (600W)	Rated Output			Voltage	Programming Resolution			Display Resolution	
	V	A	OVP	Ripple	V	A	OVP	V	A
PCL600-1H	0~100V	0~6A	0~105V	≤100mV	0.1V	0.001A	0.1V	0.1V	0.001A
PCL600-150	0~150V	0~4A	0~157.5V	≤100mV	0.1V	0.001A	0.1V	0.1V	0.001A
PCL600-2H	0~200V	0~3A	0~210V	≤200mV	0.1V	0.001A	0.1V	0.1V	0.001A
PCL600-3H	0~300V	0~2A	0~315V	≤200mV	0.1V	0.001A	0.1V	0.1V	0.001A
PCL600-4H	0~400V	0~1.5A	0~420V	≤200mV	0.1V	0.001A	0.1V	0.1V	0.001A
PCL600-5H	0~500V	0~1.2A	0~525V	≤200mV	0.1V	0.001A	0.1V	0.1V	0.001A
Dimensions	212.5Wx88Hx340D mm (1/2 2U)								
Weight	Approx 5kg								
AC Input	1φ3W (L, N, PE), 220V±10% 47~63Hz								

Model (1200W)	Rated Output			Voltage	Programming Resolution			Display Resolution	
	V	A	OVP	Ripple	V	A	OVP	V	A
PCL1200-20S	0~20V	0~60A	0~21V	≤50mV	0.01V	0.01A	0.01V	0.01V	0.01A
PCL1200-30S	0~30V	0~40A	0~31.5V	≤50mV	0.01V	0.01A	0.01V	0.01V	0.01A
PCL1200-60S	0~60V	0~20A	0~63V	≤50mV	0.01V	0.01A	0.01V	0.01V	0.01A
PCL1200-1HS	0~100V	0~12A	0~105V	≤100mV	0.1V	0.01A	0.1V	0.1V	0.01A
PCL1200-120S	0~120V	0~10A	0~126V	≤100mV	0.1V	0.01A	0.1V	0.1V	0.01A
PCL1200-150S	0~150V	0~8A	0~157.5V	≤100mV	0.1V	0.001A	0.1V	0.1V	0.001A
PCL1200-2HS	0~200V	0~6A	0~210V	≤100mV	0.1V	0.001A	0.1V	0.1V	0.001A
PCL1200-3HS	0~300V	0~4A	0~315V	≤100mV	0.1V	0.001A	0.1V	0.1V	0.001A
PCL1200-4HS	0~400V	0~3A	0~420V	≤100mV	0.1V	0.001A	0.1V	0.1V	0.001A
PCL1200-5HS	0~500V	0~2.4A	0~525V	≤200mV	0.1V	0.001A	0.1V	0.1V	0.001A
PCL1200-6HS	0~600V	0~2A	0~630V	≤200mV	0.1V	0.001A	0.1V	0.1V	0.001A
Dimensions	212.5Wx88Hx340D mm (1/2 2U)								
Weight	Approx 6kg								
AC Input	1φ3W (L, N, PE), 220V±10% 47~63Hz								

# High Power DC Power Supply



Model (1200W)	Rated Output			Voltage Ripple	Programming Resolution			Display Resolution	
	V	A	OVP		V	A	OVP	V	A
PCL1200-6 <sup>Ⓞ</sup>	0~6V	0~200A	0~6.3V	≤50mV	0.001V	0.1A	0.001V	0.001V	0.1A
PCL1200-12 <sup>Ⓞ</sup>	0~12V	0~100A	0~12.6V	≤50mV	0.01V	0.1A	0.01V	0.01V	0.1A
PCL1200-15	0~15V	0~80A	0~15.75V	≤50mV	0.01V	0.01A	0.01V	0.01V	0.01A
PCL1200-20	0~20V	0~60A	0~21V	≤50mV	0.01V	0.01A	0.01V	0.01V	0.01A
PCL1200-30	0~30V	0~40A	0~31.5V	≤50mV	0.01V	0.01A	0.01V	0.01V	0.01A
PCL1200-60	0~60V	0~20A	0~63V	≤50mV	0.01V	0.01A	0.01V	0.01V	0.01A
PCL1200-1H	0~100V	0~12A	0~105V	≤100mV	0.1V	0.01A	0.1V	0.1V	0.01A
PCL1200-120	0~120V	0~10A	0~126V	≤100mV	0.1V	0.001A	0.1V	0.1V	0.01A
PCL1200-150	0~150V	0~8A	0~157.5V	≤100mV	0.1V	0.001A	0.1V	0.1V	0.001A
PCL1200-2H	0~200V	0~6A	0~210V	≤100mV	0.1V	0.001A	0.1V	0.1V	0.001A
PCL1200-3H	0~300V	0~4A	0~315V	≤100mV	0.1V	0.001A	0.1V	0.1V	0.001A
PCL1200-4H	0~400V	0~3A	0~420V	≤100mV	0.1V	0.001A	0.1V	0.1V	0.001A
PCL1200-5H	0~500V	0~2.4A	0~525V	≤200mV	0.1V	0.001A	0.1V	0.1V	0.001A
PCL1200-6H	0~600V	0~2A	0~630V	≤200mV	0.1V	0.001A	0.1V	0.1V	0.001A
Dimensions	Current <100A: 425W×88H×463D mm (2U) Current ≥100A: 425W×88H×503D mm (2U-L)								
Weight	Approx 11kg								
AC Input	1φ3W (L, N, PE), 220V±10% 47~63Hz								

Remarks<sup>Ⓞ</sup>: Load Regulation: CV≤0.21%+2LSB

Model (1500W)	Rated Output			Voltage Ripple	Programming Resolution			Display Resolution	
	V	A	OVP		V	A	OVP	V	A
PCL1500-12 <sup>Ⓞ</sup>	0~12V	0~125A	0~12.6V	≤50mV	0.01V	0.1A	0.01V	0.01V	0.1A
PCL1500-15	0~15V	0~100A	0~15.75V	≤50mV	0.01V	0.1A	0.01V	0.01V	0.1A
PCL1500-20	0~20V	0~75A	0~21V	≤50mV	0.01V	0.01A	0.01V	0.01V	0.01A
PCL1500-30	0~30V	0~50A	0~31.5V	≤50mV	0.01V	0.01A	0.01V	0.01V	0.01A
PCL1500-60	0~60V	0~25A	0~63V	≤50mV	0.01V	0.01A	0.01V	0.01V	0.01A
PCL1500-1H	0~100V	0~15A	0~105V	≤100mV	0.1V	0.01A	0.1V	0.1V	0.01A
PCL1500-150	0~150V	0~10A	0~157.5V	≤100mV	0.1V	0.01A	0.1V	0.1V	0.01A
PCL1500-2H	0~200V	0~7.5A	0~210V	≤100mV	0.1V	0.001A	0.1V	0.1V	0.001A
PCL1500-3H	0~300V	0~5A	0~315V	≤100mV	0.1V	0.001A	0.1V	0.1V	0.001A
PCL1500-4H	0~400V	0~3.75A	0~420V	≤100mV	0.1V	0.001A	0.1V	0.1V	0.001A
PCL1500-5H	0~500V	0~3A	0~525V	≤200mV	0.1V	0.001A	0.1V	0.1V	0.001A
PCL1500-6H	0~600V	0~2.5A	0~630V	≤200mV	0.1V	0.001A	0.1V	0.1V	0.001A
Dimensions	Current <100A: 425W×88H×463D mm (2U) Current ≥100A: 425W×88H×503D mm (2U-L)								
Weight	Approx 11.5kg								
AC Input	1φ3W (L, N, PE), 220V±10% 47~63Hz								

Remarks<sup>Ⓞ</sup>: Load Regulation: CV≤0.21%+2LSB

# High Power DC Power Supply



Model (2400W)	Rated Output			Voltage Ripple	Programming Resolution			Display Resolution	
	V	A	OVP		V	A	OVP	V	A
PCL2400-12	0~12V	0~200A	0~12.6V	≤100mV	0.01V	0.1A	0.01V	0.01V	0.1A
PCL2400-20	0~20V	0~120A	0~21V	≤100mV	0.01V	0.1A	0.01V	0.01V	0.1A
PCL2400-30	0~30V	0~80A	0~31.5V	≤100mV	0.01V	0.01A	0.01V	0.01V	0.01A
PCL2400-40	0~40V	0~60A	0~42V	≤100mV	0.01V	0.01A	0.01V	0.01V	0.01A
PCL2400-60	0~60V	0~40A	0~63V	≤100mV	0.01V	0.01A	0.01V	0.01V	0.01A
PCL2400-1H	0~100V	0~24A	0~105V	≤100mV	0.1V	0.01A	0.1V	0.1V	0.01A
PCL2400-120	0~120V	0~20A	0~126V	≤100mV	0.1V	0.01A	0.1V	0.1V	0.01A
PCL2400-150	0~150V	0~16A	0~157.5V	≤100mV	0.1V	0.01A	0.1V	0.1V	0.01A
PCL2400-2H	0~200V	0~12A	0~210V	≤100mV	0.1V	0.01A	0.1V	0.1V	0.01A
PCL2400-3H	0~300V	0~8A	0~315V	≤200mV	0.1V	0.001A	0.1V	0.1V	0.001A
PCL2400-4H	0~400V	0~6A	0~420V	≤200mV	0.1V	0.001A	0.1V	0.1V	0.001A
PCL2400-5H	0~500V	0~4.8A	0~525V	≤200mV	0.1V	0.001A	0.1V	0.1V	0.001A
PCL2400-6H	0~600V	0~4A	0~630V	≤200mV	0.1V	0.001A	0.1V	0.1V	0.001A
Dimensions	Current <100A: 425W×88H×463D mm (2U) Current ≥100A: 425W×88H×503D mm (2U-L)								
Weight	Approx 12~13kg								
AC Input	1φ3W (L, N, PE), 220V±10% 47~63Hz								

Model (3000W)	Rated Output			Voltage Ripple	Programming Resolution			Display Resolution	
	V	A	OVP		V	A	OVP	V	A
PCL3000-15	0~15V	0~200A	0~15.75V	≤100mV	0.01V	0.1A	0.01V	0.01V	0.1A
PCL3000-20	0~20V	0~150A	0~21V	≤100mV	0.01V	0.1A	0.01V	0.01V	0.1A
PCL3000-30	0~30V	0~100A	0~31.5V	≤100mV	0.01V	0.1A	0.01V	0.01V	0.1A
PCL3000-40	0~40V	0~75A	0~42V	≤100mV	0.01V	0.01A	0.01V	0.01V	0.01A
PCL3000-50	0~50V	0~60A	0~52.5V	≤100mV	0.01V	0.01A	0.01V	0.01V	0.01A
PCL3000-60	0~60V	0~50A	0~63V	≤100mV	0.01V	0.01A	0.01V	0.01V	0.01A
PCL3000-1H	0~100V	0~30A	0~105V	≤100mV	0.1V	0.01A	0.1V	0.1V	0.01A
PCL3000-120	0~120V	0~25A	0~126V	≤100mV	0.1V	0.01A	0.1V	0.1V	0.01A
PCL3000-150	0~150V	0~20A	0~157.5V	≤100mV	0.1V	0.01A	0.1V	0.1V	0.01A
PCL3000-2H	0~200V	0~15A	0~210V	≤100mV	0.1V	0.01A	0.1V	0.1V	0.01A
PCL3000-3H	0~300V	0~10A	0~315V	≤200mV	0.1V	0.01A	0.1V	0.1V	0.01A
PCL3000-4H	0~400V	0~7.5A	0~420V	≤200mV	0.1V	0.001A	0.1V	0.1V	0.001A
PCL3000-5H	0~500V	0~6A	0~525V	≤200mV	0.1V	0.001A	0.1V	0.1V	0.001A
PCL3000-6H	0~600V	0~5A	0~630V	≤200mV	0.1V	0.001A	0.1V	0.1V	0.001A
Dimensions	Current <100A: 425W×88H×463D mm (2U) Current ≥100A: 425W×88H×503D mm (2U-L)								
Weight	Approx 12~14kg								
AC Input	1φ3W (L, N, PE), 220V±10% 47~63Hz								

# High Power DC Power Supply



Model (4000W)	Rated Output			Voltage Ripple	Programming Resolution			Display Resolution	
	V	A	OVP		V	A	OVP	V	A
PCL4000-20	0~20V	0~200A	0~21V	≤100mV	0.01V	0.1A	0.01V	0.01V	0.1A
PCL4000-30	0~30V	0~133A	0~31.5V	≤100mV	0.01V	0.1A	0.01V	0.01V	0.1A
PCL4000-40	0~40V	0~100A	0~42V	≤100mV	0.01V	0.1A	0.01V	0.01V	0.1A
PCL4000-60	0~60V	0~67A	0~63V	≤100mV	0.01V	0.01A	0.01V	0.01V	0.01A
PCL4000-1H	0~100V	0~40A	0~105V	≤100mV	0.1V	0.01A	0.1V	0.1V	0.01A
PCL4000-150	0~150V	0~26.7A	0~157.5V	≤200mV	0.1V	0.01A	0.1V	0.1V	0.01A
PCL4000-2H	0~200V	0~20A	0~210V	≤200mV	0.1V	0.01A	0.1V	0.1V	0.01A
PCL4000-3H	0~300V	0~13.3A	0~315V	≤200mV	0.1V	0.01A	0.1V	0.1V	0.01A
PCL4000-4H	0~400V	0~10A	0~420V	≤200mV	0.1V	0.01A	0.1V	0.1V	0.01A
PCL4000-5H	0~500V	0~8A	0~525V	≤200mV	0.1V	0.001A	0.1V	0.1V	0.001A
PCL4000-6H	0~600V	0~6.7A	0~630V	≤200mV	0.1V	0.001A	0.1V	0.1V	0.001A
<b>Dimensions</b>	425W×88H×503D mm (2U-L)								
<b>Weight</b>	Approx 16kg								
<b>AC Input</b>	3φ4W (L1, L2, L3, PE), 380V±10% 47~63Hz								

Model (5000W)	Rated Output			Voltage Ripple	Programming Resolution			Display Resolution	
	V	A	OVP		V	A	OVP	V	A
PCL5000-20	0~20V	0~250A	0~21V	≤100mV	0.01V	0.1A	0.01V	0.01V	0.1A
PCL5000-30	0~30V	0~167A	0~31.5V	≤100mV	0.01V	0.1A	0.01V	0.01V	0.1A
PCL5000-40	0~40V	0~125A	0~42V	≤100mV	0.01V	0.1A	0.01V	0.01V	0.1A
PCL5000-60	0~60V	0~83A	0~63V	≤100mV	0.01V	0.01A	0.01V	0.01V	0.01A
PCL5000-1H	0~100V	0~50A	0~105V	≤100mV	0.1V	0.01A	0.1V	0.1V	0.01A
PCL5000-150	0~150V	0~33.3A	0~157.5V	≤200mV	0.1V	0.01A	0.1V	0.1V	0.01A
PCL5000-2H	0~200V	0~25A	0~210V	≤200mV	0.1V	0.01A	0.1V	0.1V	0.01A
PCL5000-3H	0~300V	0~16.7A	0~315V	≤200mV	0.1V	0.01A	0.1V	0.1V	0.01A
PCL5000-4H	0~400V	0~12.5A	0~420V	≤200mV	0.1V	0.01A	0.1V	0.1V	0.01A
PCL5000-5H	0~500V	0~10A	0~525V	≤200mV	0.1V	0.01A	0.1V	0.1V	0.01A
PCL5000-6H	0~600V	0~8.3A	0~630V	≤200mV	0.1V	0.001A	0.1V	0.1V	0.001A
<b>Dimensions</b>	425W×88H×503D mm (2U-L)								
<b>Weight</b>	Approx 16kg								
<b>AC Input</b>	3φ4W (L1, L2, L3, PE), 380V±10% 47~63Hz								

# High Power DC Power Supply



Model (6000W)	Rated Output			Voltage Ripple	Programming Resolution			Display Resolution	
	V	A	OVP		V	A	OVP	V	A
PCL6000-20	0~20V	0~300A	0~21V	≤100mV	0.01V	0.1A	0.01V	0.01V	0.1A
PCL6000-30	0~30V	0~200A	0~31.5V	≤100mV	0.01V	0.1A	0.01V	0.01V	0.1A
PCL6000-40	0~40V	0~150A	0~42V	≤100mV	0.01V	0.1A	0.01V	0.01V	0.1A
PCL6000-60	0~60V	0~100A	0~63V	≤100mV	0.01V	0.1A	0.01V	0.01V	0.1A
PCL6000-1H	0~100V	0~60A	0~105V	≤100mV	0.1V	0.01A	0.1V	0.1V	0.01A
PCL6000-120	0~120V	0~50A	0~126V	≤200mV	0.1V	0.01A	0.1V	0.1V	0.01A
PCL6000-150	0~150V	0~40A	0~157.5V	≤200mV	0.1V	0.01A	0.1V	0.1V	0.01A
PCL6000-2H	0~200V	0~30A	0~210V	≤200mV	0.1V	0.01A	0.1V	0.1V	0.01A
PCL6000-3H	0~300V	0~20A	0~315V	≤200mV	0.1V	0.01A	0.1V	0.1V	0.01A
PCL6000-4H	0~400V	0~15A	0~420V	≤200mV	0.1V	0.01A	0.1V	0.1V	0.01A
PCL6000-5H	0~500V	0~12A	0~525V	≤200mV	0.1V	0.01A	0.1V	0.1V	0.01A
PCL6000-6H	0~600V	0~10A	0~630V	≤200mV	0.1V	0.01A	0.1V	0.1V	0.01A
PCL6000-2H	0~200V	0~30A	0~210V	≤200mV	0.1V	0.01A	0.1V	0.1V	0.01A
PCL6000-3H	0~300V	0~20A	0~315V	≤200mV	0.1V	0.01A	0.1V	0.1V	0.01A
PCL6000-4H	0~400V	0~15A	0~420V	≤200mV	0.1V	0.01A	0.1V	0.1V	0.01A
PCL6000-5H	0~500V	0~12A	0~525V	≤200mV	0.1V	0.01A	0.1V	0.1V	0.01A
PCL6000-6H	0~600V	0~10A	0~630V	≤200mV	0.1V	0.01A	0.1V	0.1V	0.01A
Dimensions	482.6Wx132.5Hx533D mm (3U)								
Weight	Approx 20~21kg								
AC Input	3φ4W (L1, L2, L3, PE), 380V±10% 47~63Hz								

Model (8000W)	Rated Output			Voltage Ripple	Programming Resolution			Display Resolution	
	V	A	OVP		V	A	OVP	V	A
PCL8000-40	0~40V	0~200A	0~42V	≤100mV	0.01V	0.1A	0.01V	0.01V	0.1A
PCL8000-50	0~50V	0~160A	0~55V	≤100mV	0.01V	0.1A	0.01V	0.01V	0.1A
PCL8000-60	0~60V	0~133A	0~63V	≤100mV	0.01V	0.1A	0.01V	0.01V	0.1A
PCL8000-1H	0~100V	0~80A	0~105V	≤100mV	0.1V	0.01A	0.1V	0.1V	0.01A
PCL8000-150	0~150V	0~53A	0~157.5V	≤200mV	0.1V	0.01A	0.1V	0.1V	0.01A
PCL8000-2H	0~200V	0~40A	0~210V	≤200mV	0.1V	0.01A	0.1V	0.1V	0.01A
PCL8000-3H	0~300V	0~26.7A	0~315V	≤200mV	0.1V	0.01A	0.1V	0.1V	0.01A
PCL8000-4H	0~400V	0~20A	0~420V	≤200mV	0.1V	0.01A	0.1V	0.1V	0.01A
PCL8000-5H	0~500V	0~16A	0~525V	≤200mV	0.1V	0.01A	0.1V	0.1V	0.01A
PCL8000-6H	0~600V	0~13.3A	0~630V	≤200mV	0.1V	0.01A	0.1V	0.1V	0.01A
PCL8000-8H	0~800V	0~10A	0~840V	≤200mV	0.1V	0.01A	0.1V	0.1V	0.01A
Dimensions	482.6Wx132.5Hx533D mm (3U)								
Weight	Approx 22kg								
AC Input	3φ4W (L1, L2, L3, PE), 380V±10% 47~63Hz								

TWINTEX • www.twintex.com.tw

Taipei, Taiwan: Tel: +886-02-2915 0101 • Fax: +886-02-2916 0101  
 Shenzhen, China: Tel.: +86-755-2812 9890 • Fax: +86-755-2814 9802

# High Power DC Power Supply



Model (9000W)	Rated Output			Voltage	Programming Resolution			Display Resolution	
	V	A	OVP	Ripple	V	A	OVP	V	A
PCL9000-40	0~40V	0~225A	0~42V	≤100mV	0.01V	0.1A	0.01V	0.01V	0.1A
PCL9000-60	0~60V	0~150A	0~63V	≤100mV	0.01V	0.1A	0.01V	0.01V	0.1A
PCL9000-90	0~90V	0~100A	0~94.5V	≤100mV	0.01V	0.1A	0.01V	0.01V	0.1A
PCL9000-1H	0~100V	0~90A	0~105V	≤100mV	0.1V	0.01A	0.1V	0.1V	0.01A
PCL9000-120	0~120V	0~75A	0~126V	≤200mV	0.1V	0.01A	0.1V	0.1V	0.01A
PCL9000-150	0~150V	0~60A	0~157.5V	≤200mV	0.1V	0.01A	0.1V	0.1V	0.01A
PCL9000-2H	0~200V	0~45A	0~210V	≤200mV	0.1V	0.01A	0.1V	0.1V	0.01A
PCL9000-3H	0~300V	0~30A	0~315V	≤200mV	0.1V	0.01A	0.1V	0.1V	0.01A
PCL9000-4H	0~400V	0~22.5A	0~420V	≤200mV	0.1V	0.01A	0.1V	0.1V	0.01A
PCL9000-5H	0~500V	0~18A	0~525V	≤200mV	0.1V	0.01A	0.1V	0.1V	0.01A
PCL9000-6H	0~600V	0~15A	0~630V	≤200mV	0.1V	0.01A	0.1V	0.1V	0.01A
Dimensions	482.6Wx132.5Hx533D mm (3U)								
Weight	Approx 25kg								
AC Input	3φ4W (L1, L2, L3, PE), 380V±10% 47~63Hz								

For the purpose of product improvement, specifications are subject to change without prior notice.